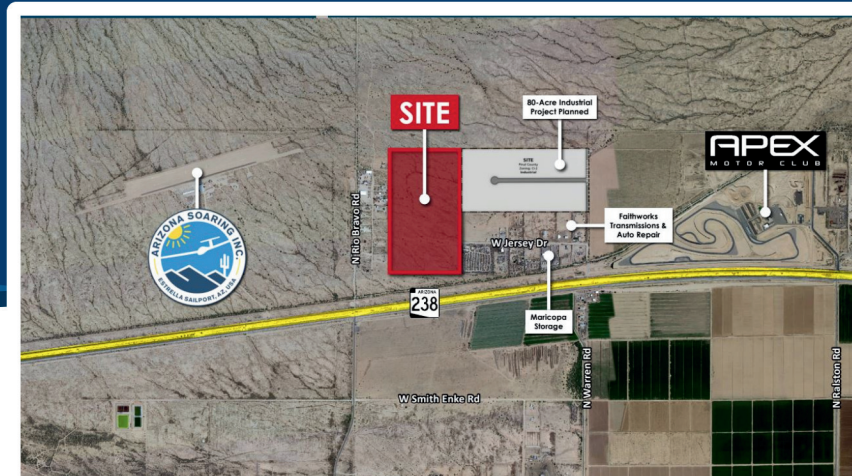


PROPERTY SUMMARY REPORT

HWY 238 & Rio Bravo



PROPERTY DETAILS

Site / Building Name:

Highway 238 & Rio Bravo Rd

City / County: Maricopa / Pinal**Zip Code:** 85139**Street Address:**

Highway 238 & Rio Bravo Road

Min Size / Max Size: +/- 96 acres**Zoning:** Industrial 1-2 (Pinal County)

AVAILABILITY

For Sale / Lease: Sale**Sale Price / Terms:** Call Property Contact

DESCRIPTION / SITE DETAILS

One lot, +/- 96 acres of commercial land located within Maricopa's "Adventure Corridor". Access easement to Rio Bravo Road.

Pinal County Parcel # 510-06-001A, 501-06-001B

Last Updated: 06.27.2024

Economic Development Contact**City of Maricopa****Office of Economic Opportunity****Christian Price**

520.494.2360

Christian.Price@MaricopaOEO.com

Property Contact**Commercial Properties, Inc.****Trent Rustan**

602.550.0709

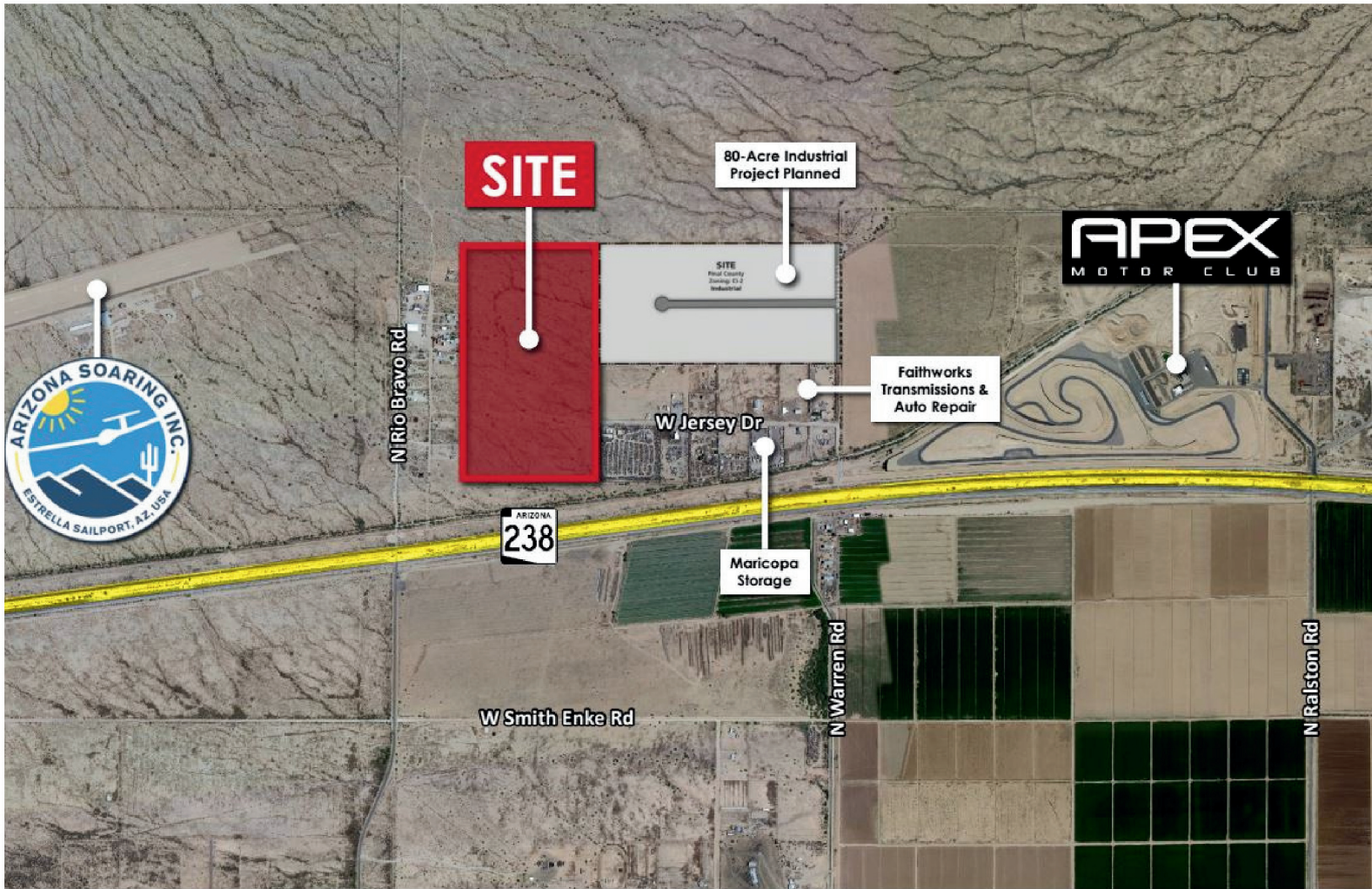
trustan@cpiaz.com

www.cpiaz.com

CITY OF
MARICOPA
PROUD HISTORY · PROSPEROUS FUTURE
www.maricopaoeo.com

PROPERTY SUMMARY REPORT

HWY 238 & Rio Bravo



Economic Development Contact
City of Maricopa
Office of Economic Opportunity
Christian Price
520.494.2360
Christian.Price@MaricopaOEO.com

Property Contact
Commercial Properties, Inc.
Trent Rustan
602.550.0709
trustan@cpiaz.com
www.cpiaz.com

CITY OF
MARICOPA
PROUD HISTORY · PROSPEROUS FUTURE
www.maricopaeo.com