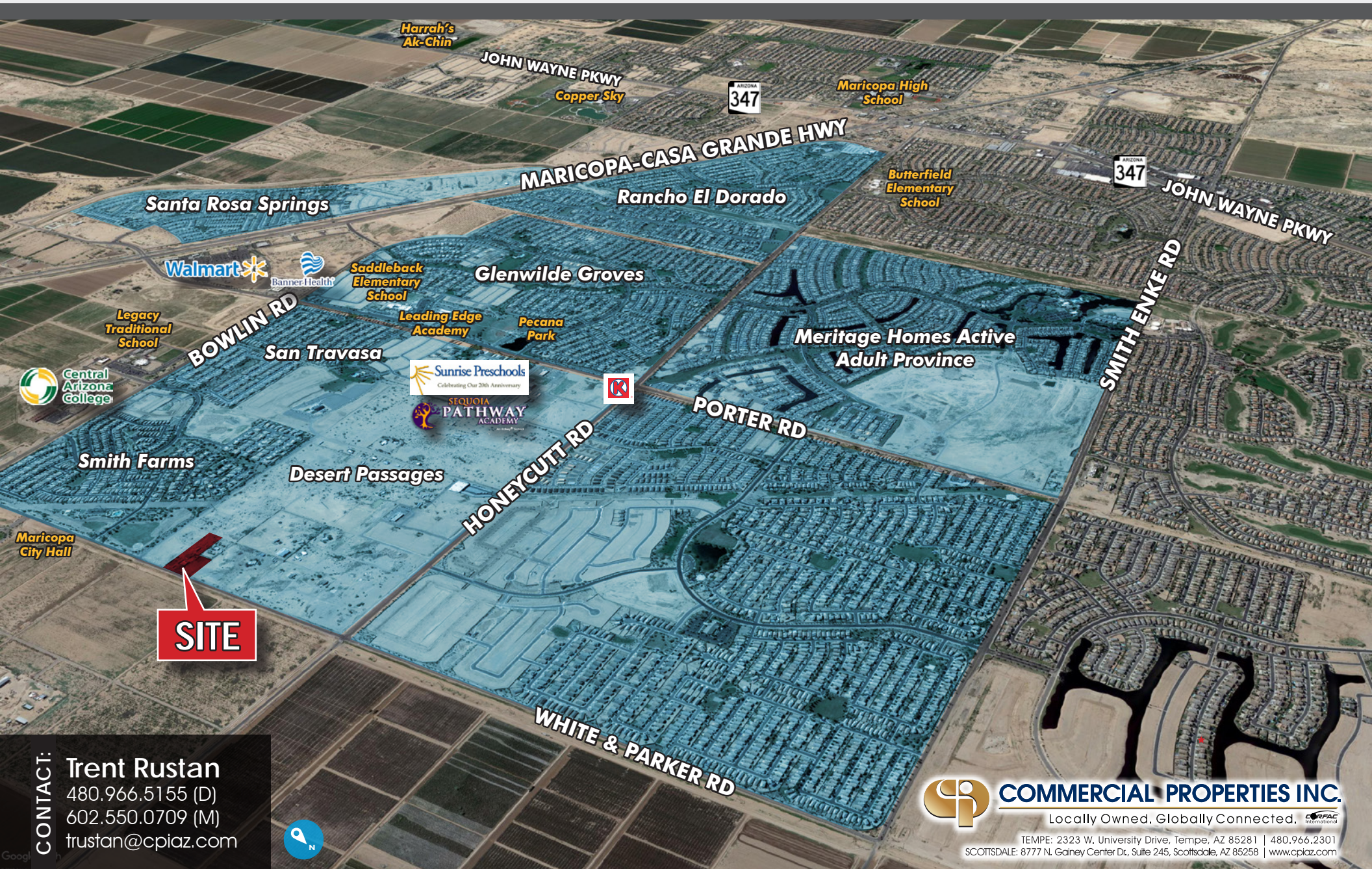


# INVESTMENT LAND FOR SALE

19008 N WHITE & PARKER RD | MARICOPA, AZ 85138

APN'S  
510-71-035A; B

±3.75 ACRES  
GR ZONING



**SITE**

**CONTACT:**  
Trent Rustan  
480.966.5155 (D)  
602.550.0709 (M)  
trustan@cpiaz.com



 **COMMERCIAL PROPERTIES INC.**  
Locally Owned, Globally Connected. 

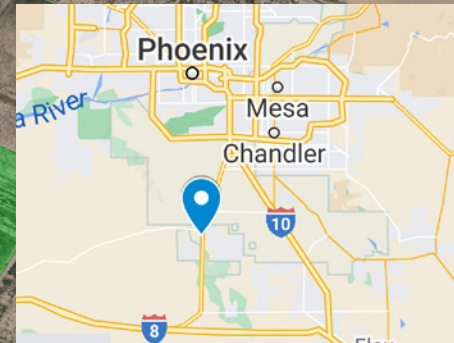
TEMPE: 2323 W. University Drive, Tempe, AZ 85281 | 480.966.2301  
SCOTTSDALE: 8777 N. Gainey Center Dr., Suite 245, Scottsdale, AZ 85258 | www.cpiplaz.com

# INVESTMENT LAND FOR SALE

19008 N WHITE & PARKER RD | MARICOPA, AZ 85138

APN'S  
510-71-035A; B

±3.75 ACRES  
GR ZONING



**COMMERCIAL PROPERTIES INC.**  
Locally Owned, Globally Connected.

TEMPE: 2323 W. University Drive, Tempe, AZ 85281 | 480.966.2301  
SCOTTSDALE: 8777 N. Gainey Center Dr., Suite 245, Scottsdale, AZ 85258 | www.cplaz.com

# INVESTMENT LAND FOR SALE

19008 N WHITE & PARKER RD | MARICOPA, AZ 85138

APN'S  
510-71-035A; B

±3.75 ACRES  
GR ZONING

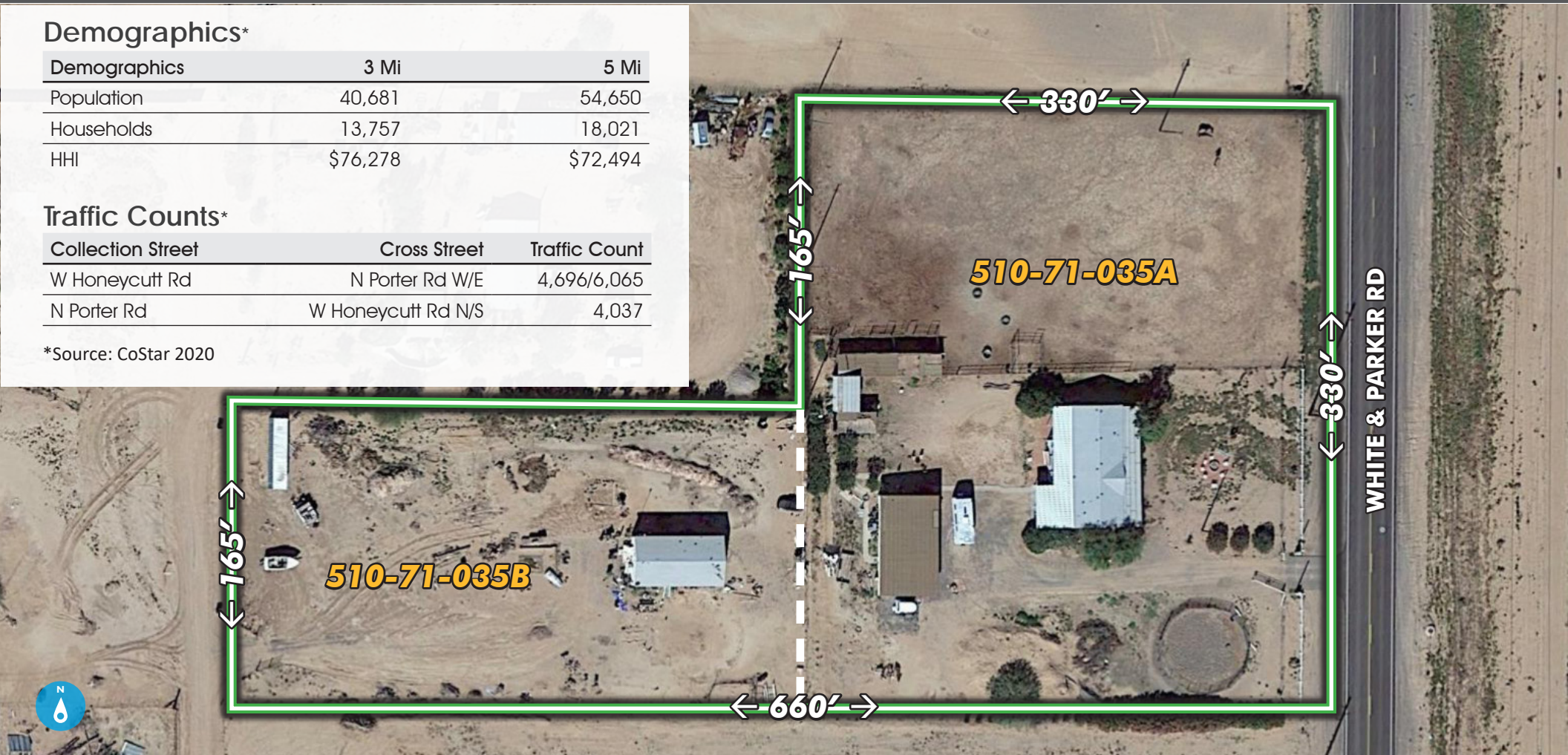
## Demographics\*

Demographics	3 Mi	5 Mi
Population	40,681	54,650
Households	13,757	18,021
HHI	\$76,278	\$72,494

## Traffic Counts\*

Collection Street	Cross Street	Traffic Count
W Honeycutt Rd	N Porter Rd W/E	4,696/6,065
N Porter Rd	W Honeycutt Rd N/S	4,037

\*Source: CoStar 2020



## INVESTMENT LAND WITH IMPROVEMENTS

- Located in high growth area
- Lot Size ±3.75 Acres
- 3 Structures & other improvements available with property
- 330' of frontage along major street adjacent to Maricopa City Hall
- *Call for details and Asking Price!*

Trent Rustan

480.966.5155 (D) | 602.550.0709 (M)  
trustan@cpi.az.com



**COMMERCIAL PROPERTIES INC.**

Locally Owned. Globally Connected. CRFAC International

TEMPE: 2323 W. University Drive, Tempe, AZ 85281 | 480.966.2301  
SCOTTSDALE: 8777 N. Gainey Center Dr., Suite 245, Scottsdale, AZ 85268 | www.cpi.az.com

# INVESTMENT LAND FOR SALE

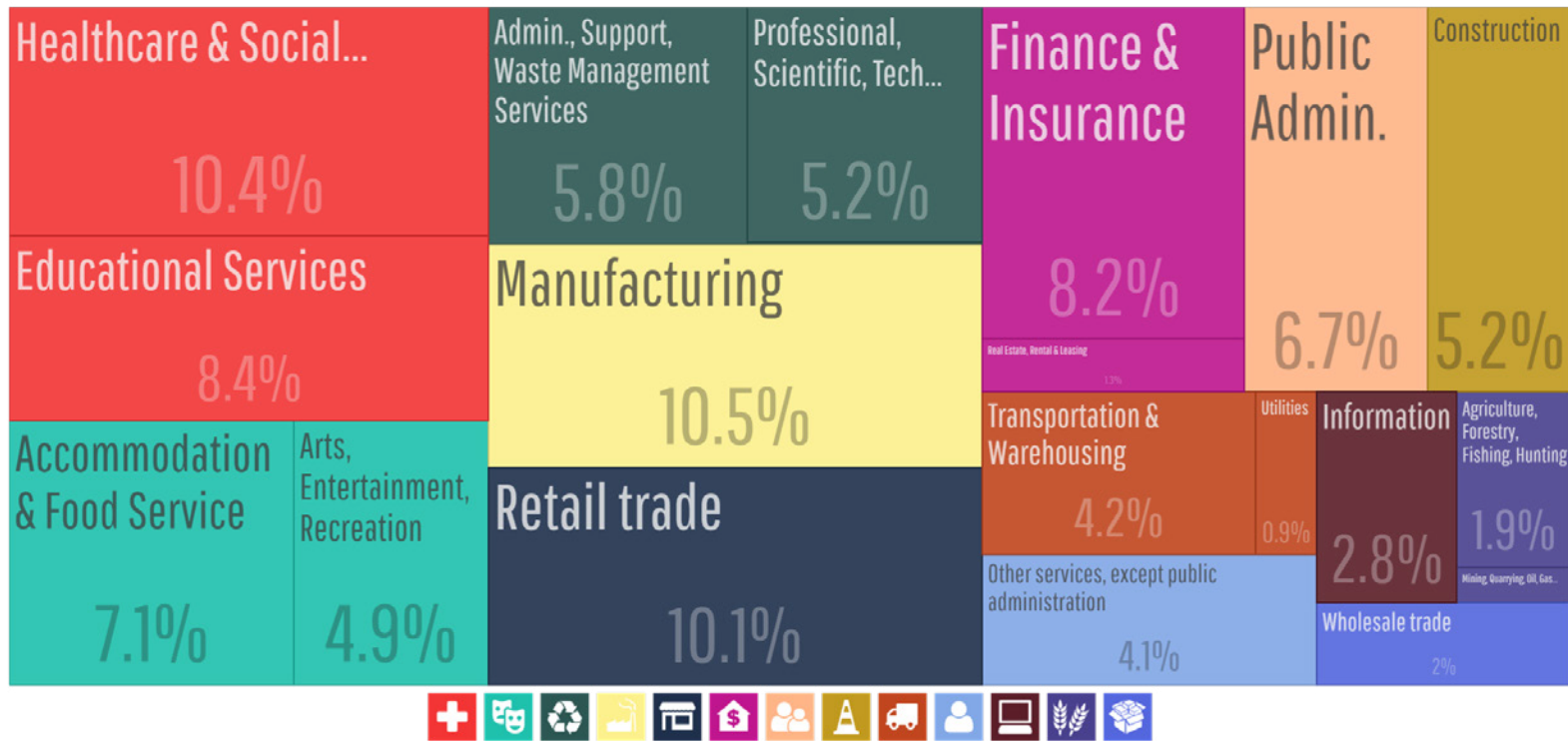
19008 N WHITE & PARKER RD | MARICOPA, AZ 85138

APN'S  
510-71-035A; B

±3.75 ACRES  
GR ZONING

## Employment by Industries in Maricopa, Az

The closest comparable data for the census place of Maricopa, AZ is from the public use microdata area of Maricopa, Casa Grande & Eloy (Southeast) Cities PUMA, AZ.



## Maricopa at a Glance

- The City's population is 51,977, according to 2018 U.S. Census Bureau.
- The average household income in Maricopa is \$68,888 (among the highest in the state of Arizona).
- Maricopa encompasses approximately 43 square miles, with a planning area of 233 square miles.
- Maricopa is Arizona's 88th municipality, incorporated on October 15, 2003.
- Maricopa offers residents and businesses the experience of a small-town atmosphere within the Phoenix metropolitan areas.
- Approximately 88% of adult residents have some post-high school education and 47% hold a bachelor's degree or graduate degree.

Data sources: U.S. Census Bureau, datausa.io, arcgis.com