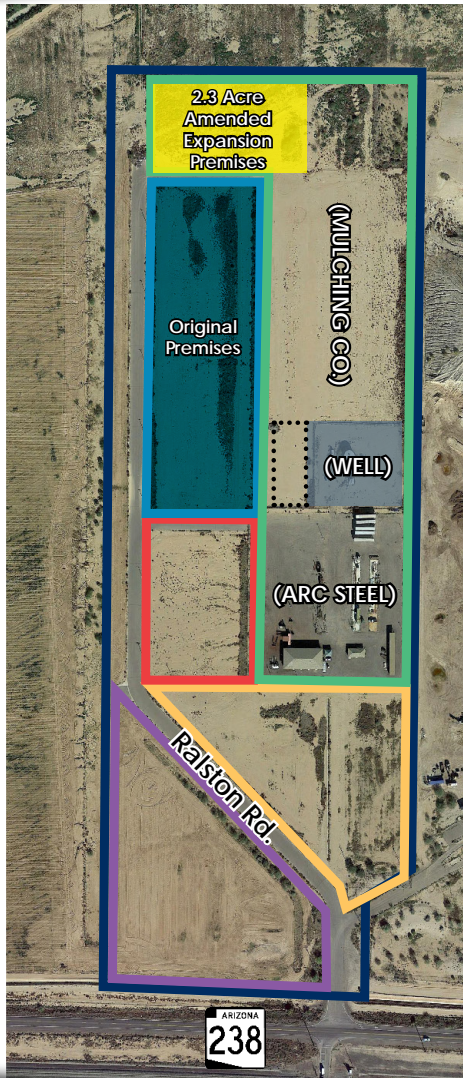


Industrial Park Pads for Lease/Sale

22423 N. Ralston Rd. | Maricopa, AZ



Parcel Information: Sold Individually or Bundled!

Parcel #	Acres
510-80-008	±23.34
510-80-007	±5.22
510-80-006	±2.3
510-80-005	±5.67
510-80-004	±5.26
Entire Project	±41.79
Well	N/A

Details:

- Pads Available
- Industrial Zoning (I-2)
- Power Hookups Available
- Water Hookups Available
- Adjacent to 280 Acre APEX Motorclub
- Just North of Highway 238
- 2 Miles West of AkChin
Southern Dunes Golf Club
- Call for Sale/ Lease Pricing

Why Choose Maricopa?

- Maricopa is experiencing unprecedented population growth.
- A captive and rapidly growing market that needs new businesses and services.
- A young, high-income community wanting local shopping and dining options.
- City incentives for projects meeting established performance criteria.




Maricopa, AZ has a population of 48,629 people with a median age of 35.7 and a median household income of \$74,515. Between 2018 and 2019 the population of Maricopa, AZ increased 2.78% and its median household income grew 7.1%. (datausa.io)

Available Individually or Bundled!
Call for Sale and/or Lease Pricing

Trent Rustan
D 480.966.5155
M 602.550.0709
trustan@cpiaz.com



COMMERCIAL PROPERTIES INC.

Locally Owned. Globally Connected. 

TEMPE: 2323 W. University Drive, Tempe, AZ 85281 | 480.966.2301
SCOTTSDALE: 8777 N. Gainey Center Dr., Suite 245, Scottsdale, AZ 85258 | www.cpiaz.com